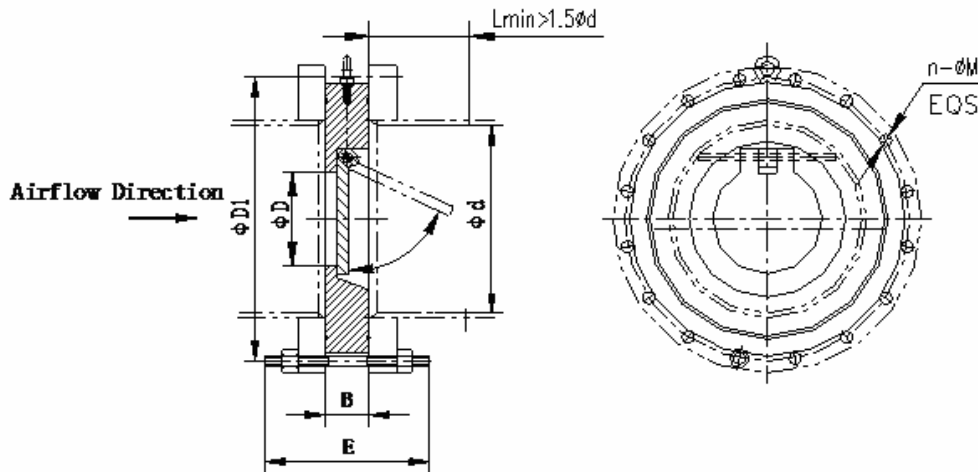


Type DCV Check Valve



(ANSI 150lbs Flange)

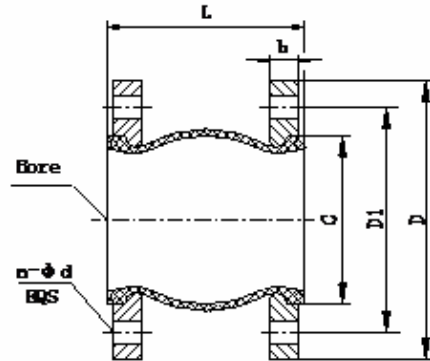
Part No.	Bore	Bolt Circle D1	D	Min d	B	E	n	M	Weight (lbs)
DCV-50	2	4 3/4	1.45	2.07	0.71	2.56	4	3/4	2.42
DCV-65	2 1/2	5 1/2	1.77	2.59	0.71	2.56	4	3/4	3.3
DCV-80	3	6	2.05	3.07	0.71	2.56	4	3/4	4.4
DCV-100	4	7 1/2	2.56	4.02	0.71	2.56	8	3/4	5.5
DCV-125	5	8 1/2	3.54	4.98	0.71	2.95	8	7/8	7.7
DCV-150	6	9 1/2	4.52	5.94	0.71	2.95	8	7/8	10.2
DCV-200	8	11 3/4	6.30	7.87	0.90	3.15	8	7/8	15.4
DCV-250	10	14 1/4	7.08	10.23	1.77	4.33	12	1	39.6

All dimensions are in inches.

Construction Details:

- Check valve sealing rated to 302° F.
- Steel body and internals.

Type KXT-III Flanged Expansion Joint



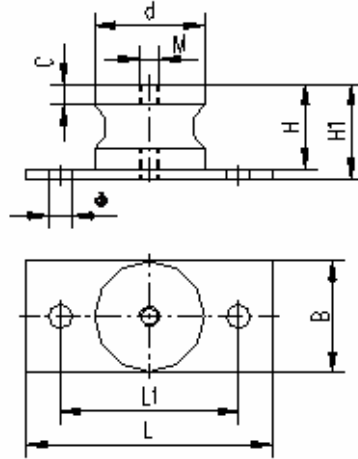
Part NO.	Bore	L	b	D1	D	n	C	d	Horizontal Displacement		Lateral Displacement	Deflexion Angle	Weight (lbs)
									Protraction	Compression			
KXT50	2	4.13	11/16	4 3/4	6	4	3.3	3/4	0.27	0.39	0.39	0.59	8.15
KXT65	2 1/2	4.53	13/16	5 1/2	7	4	4.25	3/4	0.27	0.51	0.43	0.59	12
KXT80	3	5.31	7/8	6	7 1/2	4	4.92	3/4	0.31	0.59	0.47	0.59	13.78
KXT100	4	5.90	7/8	7 1/2	9	8	5.51	3/4	0.39	0.74	0.51	0.59	21.7
KXT125	5	6.49	7/8	8 1/2	10	8	7.08	7/8	0.47	0.74	0.51	0.59	22.48
KXT150	6	7.08	15/16	9 1/2	11	8	8.07	7/8	0.47	0.78	0.55	0.59	27
KXT200	8	7.48	1 1/16	11 3/4	13 1/2	8	10.43	7/8	0.63	0.98	0.86	0.59	40.78
KXT250	10	9.05	1 1/8	14 1/4	16	12	12.2	1	0.63	0.98	0.86	0.59	61.5

All dimensions are in inches.

Construction Details:

- Elastomers Material: Fluoric-Rubber
- Working Pressure up to 140 PSIG
- Working Vacuum up to 20" Hg
- Service Temperature : 5° F ~ 400° F
- Flange: ANSI Class 150 lbs

Type JGD Vibration Isolator

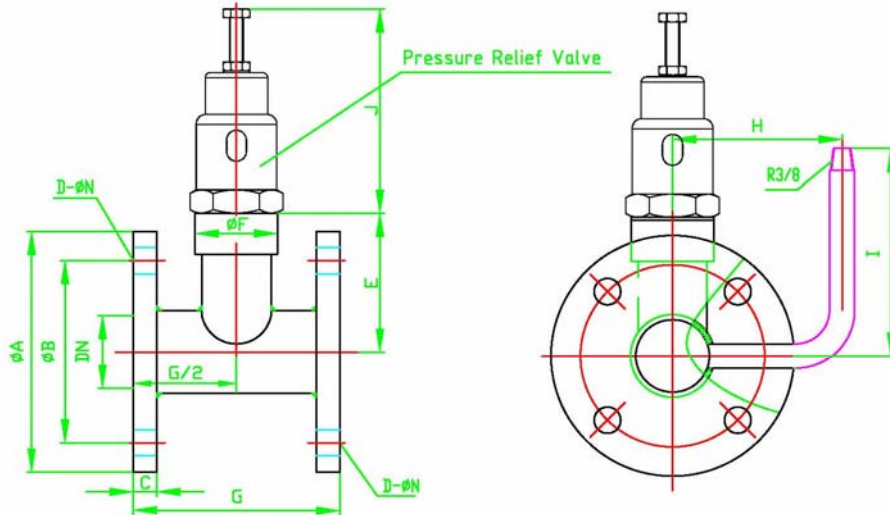


Part NO.	Rated Load (lbs)	Load Bound (lbs)	Permissible Displacement	H1	H	d	B	L1	L	M (mm)	ϕ	C	Weight (lbs)
JGD-160	352.5	176~352.5	0.236±0.078	2.2	1.97	2.55	2.6	4.13	5.7	M12X1.5	0.55	0.47	1.65
JGD-320	705	352.5~705	0.276±0.078	2.2	1.97	2.55	2.6	4.13	5.7	M12X1.5	0.55	0.47	1.65
JGD-640	1410	705~1410	0.276±0.078	2.6	2.28	3.54	3.62	5.27	7	M12X1.5	0.55	0.51	3.3
JGD-1300	2866	1410~2866	0.276±0.078	2.6	2.28	3.54	3.62	5.27	7	M12X1.5	0.55	0.51	3.3

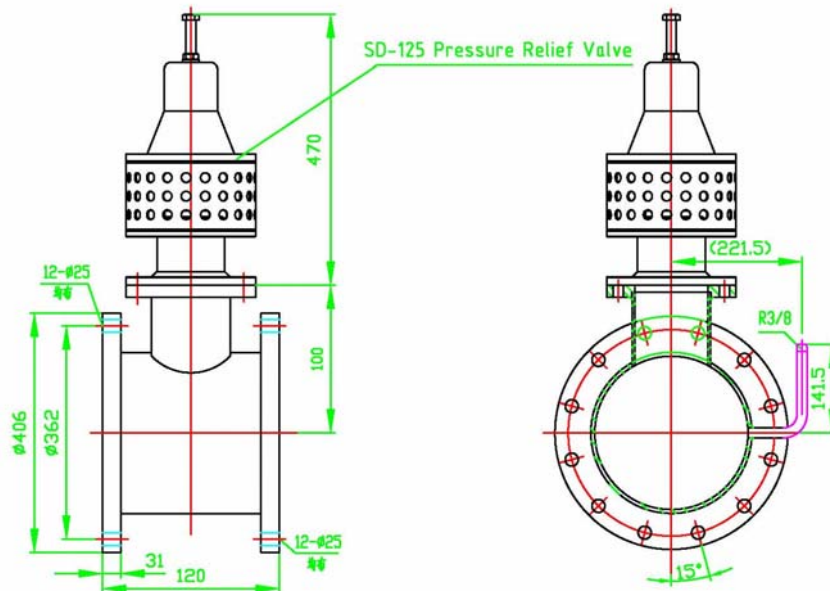
All dimensions are in inches except where noted.

Elastomers Material: Caoutchouc.

SV Series Pressure Relief Valve Assemblies (Made in China)



Model	DN	A	B	C	D	N	E	F	G	H	I	J	Pressure Relief Valve
SV-50UN	50	153	120.6	19	4	19	95	56	140	115	141	123	SVF-25
SV-65UN	65	178	140	22.5	4	19	103	56	150	115	150	126	SVF-32
SV-80UN	80	190	152.5	24	4	19	130	76	180	130	141.5	150	SVF-50
SV-100UN	100	229	190.5	24	8	19	160	105	180	130	150	200	SVF-80
SV-125UN	125	254	216	24	8	22	175	105	200	154	150	200	SVF-80
SV-150UN	150	279	241.3	25	8	22	200	121	220	169	141.5	220	SVF-100
SV-200UN	200	343	298.5	29	8	22	220	121	250	195	220	220	SVF-100

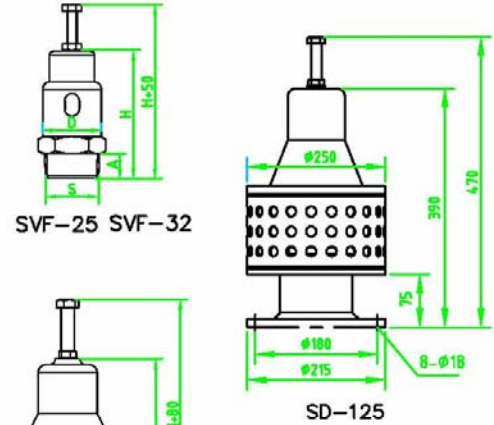


SV-250UN Pressure Relief Valve Assembly

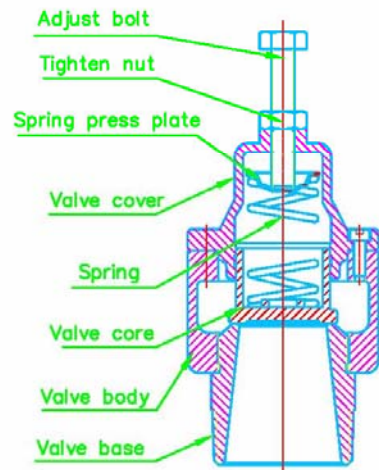
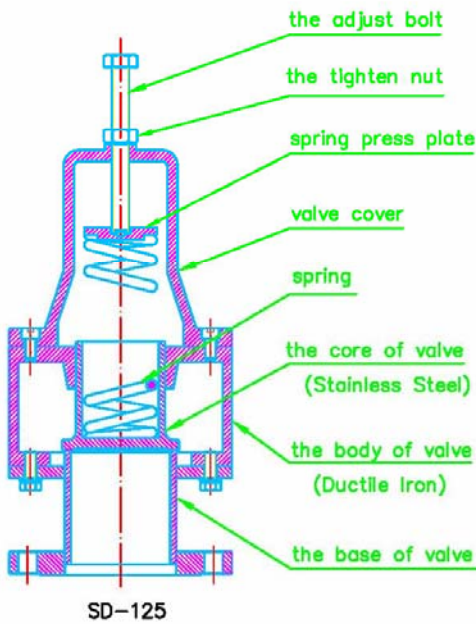
All dimensions are in metric mm except where noted.

SVF Series and SD-125 Pressure Relief Valve (Made in China)

	SVF-25	SVF-32	SVF-50	SVF-80	SVF-100
Valve body	Aluminium		Ductile Iron		
Valve core	Aluminium		Stainless Steel		
Pressure Range	0.01–0.04 MPa				
	0.03–0.10 MPa				
	0.08–0.20 MPa				
Temperature	< 200 °C				
A	17	19	30	30	30
S	R1"	R1¼"	R2"	R3"	R4"
H	90	95	130	180	200
D	40	45	Φ80	Φ103	Φ126



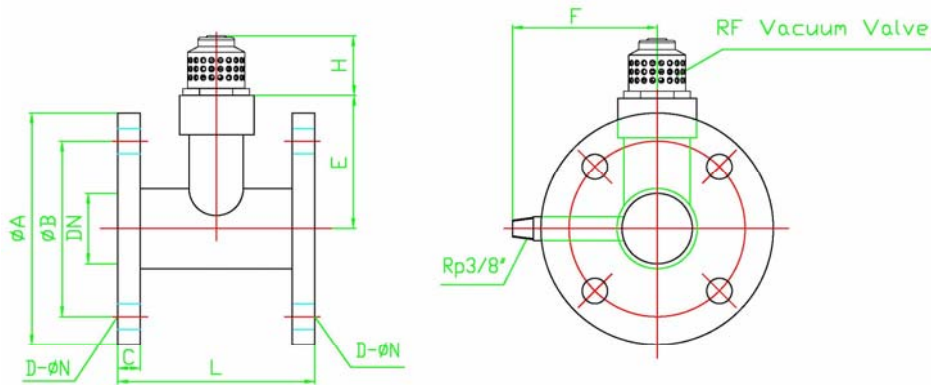
SVF-50 SVF-80 SVF-100



SVF-25 SVF-32 SVF-50
SVF-80 SVF-100

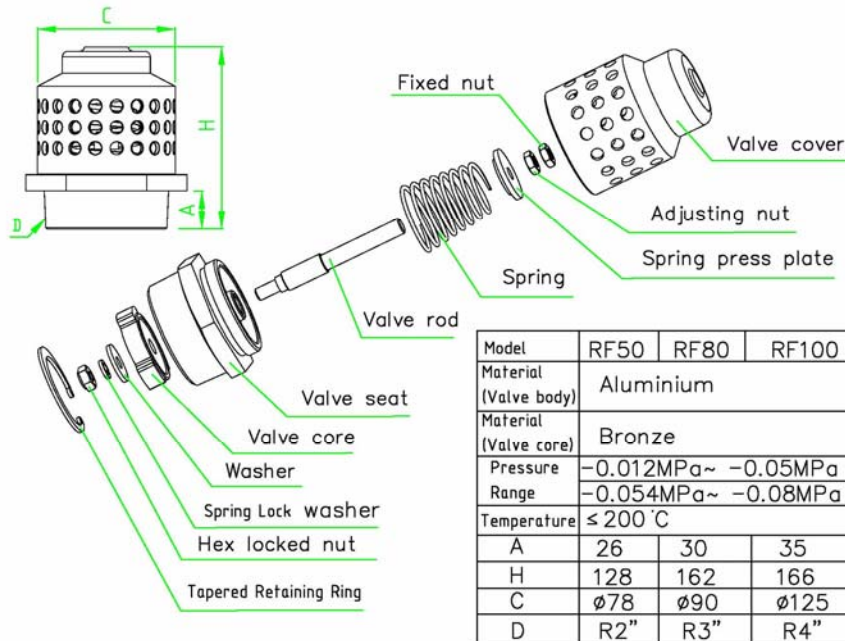
All dimensions are in metric mm except where noted.

ZK Series Vacuum Relief Valve Assemblies (Made in China)



Model	Bore DN	A	B	C	D	N	E	F	L	H	RF Vacuum Valve
ZK-50UN	50	153	120.6	19	4	19	95	75	160	102	RF-50
ZK-65UN	65	178	140	22.5	4	19	103	80	160	102	
ZK-80UN	80	190	152.5	24	8	19	130	90	180	102	
ZK-100UN	100	229	190.5	24	8	19	160	100	180	102	RF-80
ZK-125UN	125	254	216	24	8	22	175	110	200	132	
ZK-150UN	150	279	241.3	25	8	22	200	125	220	132	
ZK-200UN	200	343	298.5	29	8	22	220	150	250	132	RF-100
ZK-250UN	250	406	362	31	12	25	250	175	300	131	

RF Series Vacuum Valve (Made in China)



Model	RF50	RF80	RF100
Material (Valve body)	Aluminium		
Material (Valve core)	Bronze		
Pressure Range	-0.012MPa~ -0.05MPa -0.054MPa~ -0.08MPa		
Temperature	≤ 200 °C		
A	26	30	35
H	128	162	166
C	φ78	φ90	φ125
D	R2"	R3"	R4"

All dimensions are in metric mm except where noted.